



**INSTRUCTION MANUAL**  
**DUAL SPEED PTO KIT (540 / 1000)**  
**for KUBOTA TRACTOR M6040(N) / M7040(N) / M8540(N) / M9540(N)**  
**M6060 / M7060 / M8560 / M9960**

■ **Parts List**

**[M6060 / M7060 / M6040(N) / M7040(N)] (Kit No. 3C254-97710)**

REF. No.	PART No.	PART NAME	Q'TY	REMARKS
010	3C254-7913-0	GEAR-SHAFT, PTO	1	13T
020	3C254-7914-0	GEAR, PTO	1	17T
030	3A013-8033-0	GEAR, PTO	1	42T
040	34150-2533-0	NUT	1	
050	3C254-9833-0	LABEL, PTO, 1000	1	
060	3C254-9777-4	MANUAL, INSTRUCTION	1	This paper

**[M8540N] (Kit No. 3C474-97710)**

REF. No.	PART No.	PART NAME	Q'TY	REMARKS
010	3C473-7913-0	GEAR-SHAFT, PTO	1	13T
020	3C254-7914-0	GEAR, PTO	1	17T
030	3A013-8033-0	GEAR, PTO	1	42T
040	34150-2533-0	NUT	1	
050	3C254-9833-0	LABEL, PTO, 1000	1	
060	3C254-9777-4	MANUAL, INSTRUCTION	1	This paper

**[M9540N] (Kit No. 3C884-97710)**

REF. No.	PART No.	PART NAME	Q'TY	REMARKS
010	3C473-7913-0	GEAR-SHAFT, PTO	1	13T
020	3C254-7914-0	GEAR, PTO	1	17T
030	3A013-8033-0	GEAR, PTO	1	42T
040	34150-2533-0	NUT	1	
050	3C254-9833-0	LABEL, PTO, 1000	1	
060	3C254-9777-4	MANUAL, INSTRUCTION	1	This paper

**[M8560 / M9960 / M8540 / M9540] (Kit No. 3C294-97710)**

REF. No.	PART No.	PART NAME	Q'TY	REMARKS
010	35822-7914-0	GEAR, PTO	1	18T
020	33740-8033-2	GEAR, PTO	1	43T
030	34150-2533-0	NUT	1	
040	3A154-7913-0	GEAR-SHAFT, PTO DRIVE	1	13T
050	36330-8006-0	COLLAR 2	1	
060	36530-8026-0	BEARING, BALL	1	
070	3C254-9833-0	LABEL, PTO, 1000	1	
080	3C254-9777-4	MANUAL, INSTRUCTION	1	This paper

**■ Removal of PTO Gear Case from Tractor**

1. Drain the transmission oil through the drain plug. Save the oil for re-use.
2. Remove the PTO switch cover and disconnect the wire harness.
3. Remove the M12 bolts and nuts from the PTO gear case.
4. Remove the PTO gear case from the tractor body.  
Then, tap the case by a plastic hammer for easier removal.
5. Clean the rear surface of transmission case.

## ■ Pre-assembled PTO Gear

[M6060 / M7060]

[M6040(N) / M7040(N) / M8540N / M9540N Models]

### ◆ DISASSEMBLING

1. Remove the PTO change switch (2) and ball (3).
2. Remove the PTO gear case cover mounting bolts (12) and reamer bolt (19), then remove the PTO gear case cover (13).
3. Remove the stake of the staking nut (20), and then remove it.
4. Remove the bearing (21) by using the bearing puller.
5. Tap out the PTO shaft (32) to the rear side.
6. Remove the gears (23), (27), thrust collars (22), (29), inner rings (24), (28), hub (25) and shifter (26).
7. Pull out the PTO gear shaft (16).
8. Remove the PTO shift fork parts and PTO shift lever parts.

### ◆ REASSEMBLING

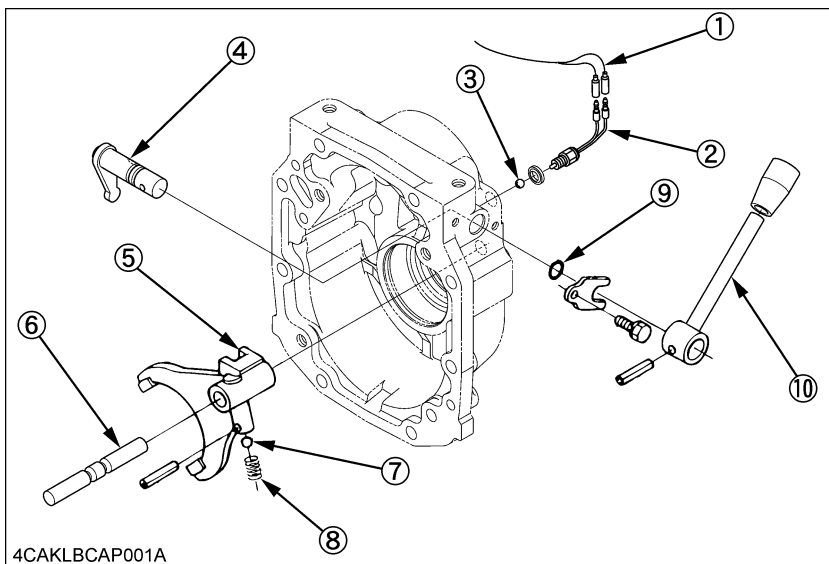
1. Replace the only parts (16), (20), (27) with new ones (010 to 040) (the ★-marked parts).
2. Direct the grooves of thrust collars (22), (29) to the inner rings (24), (28) sides.
3. Replace the PTO shaft staking nut (20) with new one (040), and stake it firmly after tightening.
4. Apply molybdenum disulfide (Three Bond 1901 or equivalent) to the inner rings (24), (28).
5. Apply grease to the oil seal (33) and O-ring (9).
6. Do not loose the balls (3), (7).
7. Tighten the reamer bolt (19) first at original position, when assemble the PTO gear case cover (13).
8. Replace the PTO label with new one (050) (the ★-marked label).

### IMPORTANT :

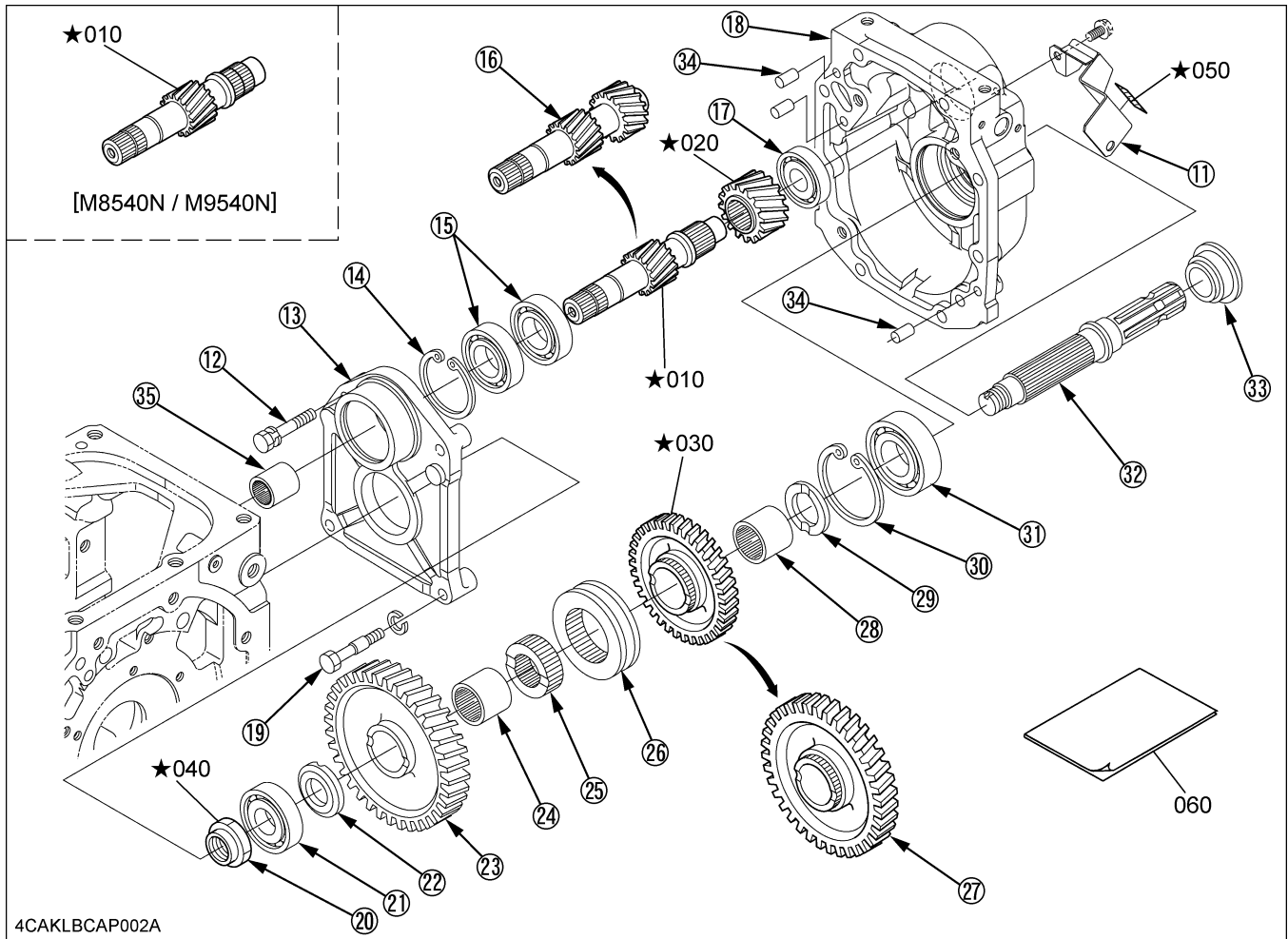
- The PTO gear shaft for M8540N / M9540N is different from other model's shaft.  
Make sure to attach the PTO gear shaft (part No. 3C473-7913-0) for M8540N / M9540N.

### <Tightening torque>

PTO shaft staking nut (040)	226 to 264 N-m (23.0 to 27.0 kgf-m)
PTO gear case cover mounting bolts (12) and reamer bolt (19)	77.5 to 90.2 N-m (7.9 to 9.2 kgf-m)



- (1) Wire harness
- (2) PTO change switch
- (3) Ball
- (4) PTO shift arm
- (5) PTO shift fork
- (6) Shift rod
- (7) Ball (Detent)
- (8) Spring
- (9) O-ring
- (10) PTO shift lever



- (11) PTO switch cover
- (12) PTO gear case cover bolt
- (13) PTO gear case cover
- (14) Internal cir clip
- (15) Ball bearing
- (16) PTO gear shaft
- (17) Ball bearing
- (18) PTO gear case
- (19) Reamer bolt
- (20) Staking nut
- (21) Ball bearing
- (22) Thrust collar
- (23) Gear

- (24) Inner ring
- (25) Hub
- (26) Shifter
- (27) Gear
- (28) Inner ring
- (29) Thrust collar
- (30) Internal cir clip
- (31) Ball bearing
- (32) PTO shaft
- (33) Oil seal
- (34) Straight pin for transmission case
- (35) Coupling

- <Component parts of the kit>
- (010) PTO gear shaft
  - (020) PTO gear
  - (030) PTO gear
  - (040) Nut
  - (050) PTO label
  - (060) Instruction manual

**[M8560 / M9960]**

**[M8540 / M9540 New models]**

#### ◆ DISASSEMBLING

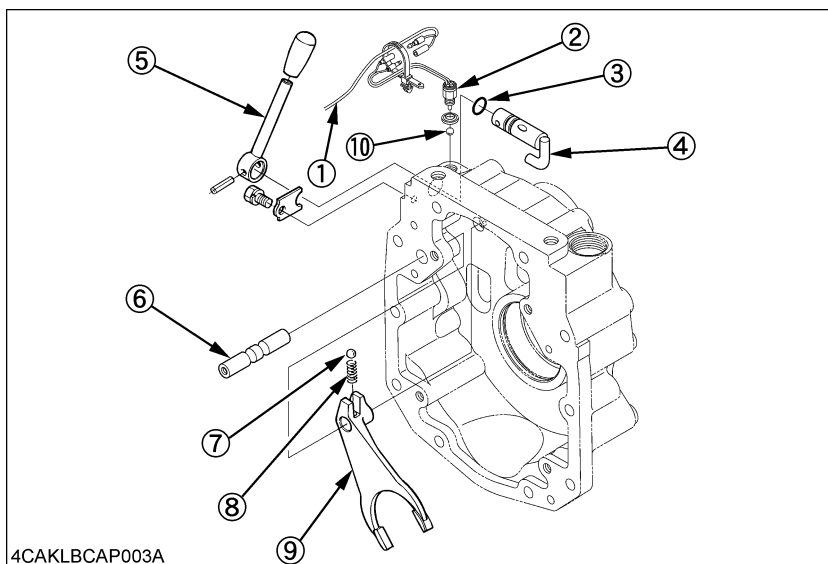
1. Remove the PTO change switch (2) and ball (10).
2. Remove the PTO gear case cover mounting bolts (12), then remove the PTO gear case cover (13).
3. Remove the stake of the staking nut (19), and then remove it.
4. Remove the bearing (21) by using the bearing puller.
5. Tap out the PTO shaft (32) to the rear side.
6. Remove the gears (24), (27), thrust collars (22), (29), inner rings (23), (28), hub (25) and shifter (26).
7. Pull out the PTO gear shaft (15) as a unit.
8. Remove the PTO shift fork parts and PTO shift lever parts.

#### ◆ REASSEMBLING

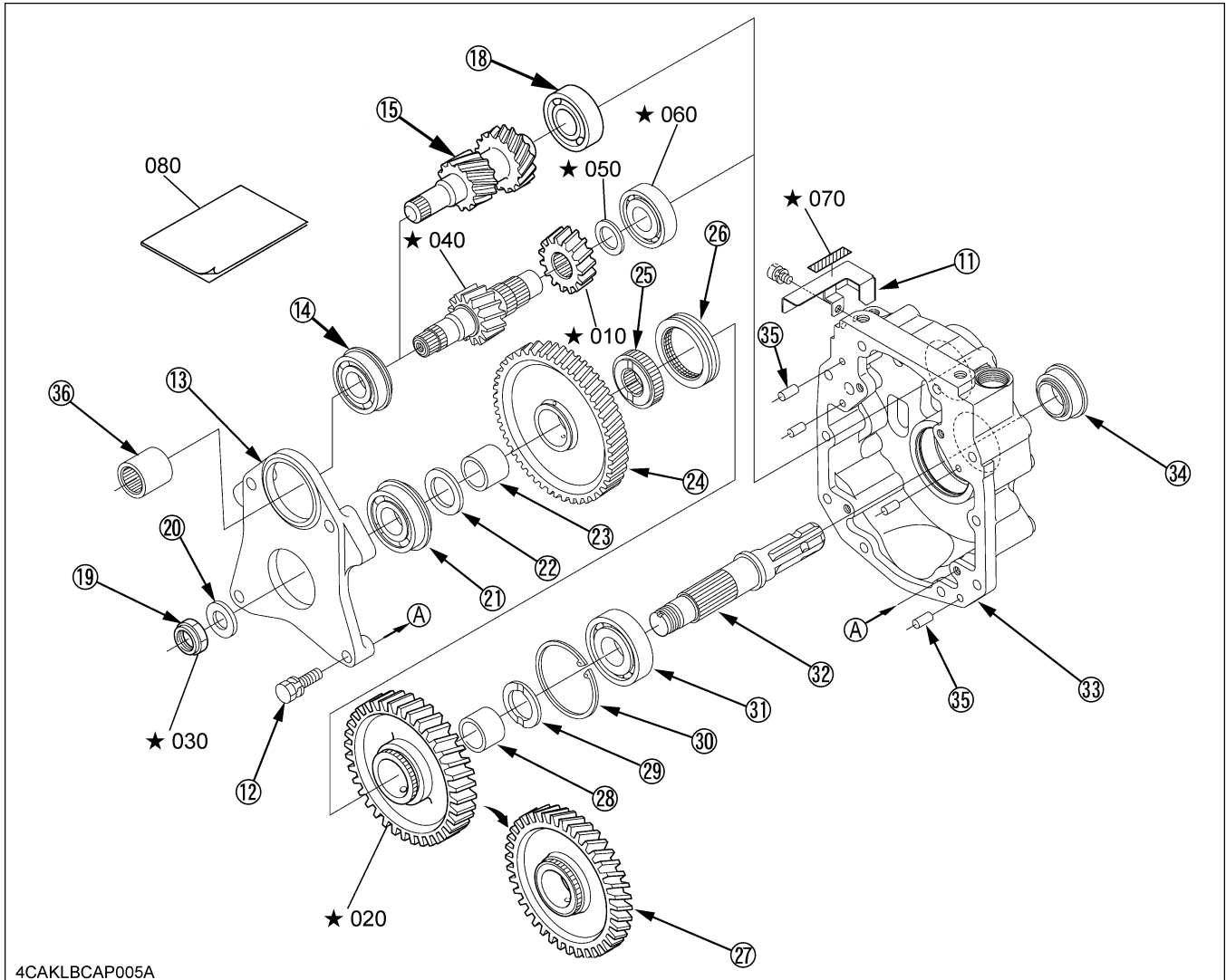
1. Replace the only parts (15), (18), (19), (27) with new ones (010 to 060) (the ★-marked parts).
2. Direct the grooves of thrust collars (22), (29) to the inner rings (23), (28) sides.
3. Replace the PTO shaft staking nut (19) with new one (030), and stake it firmly after tightening.
4. Apply molybdenum disulfide (Three Bond 1901 or equivalent) to the inner rings (23), (28).
5. Apply grease to the oil seal (34) and O-ring (3).
6. Do not loose the balls (7), (10).
7. Replace the PTO label with new one (070) (the ★-marked label).

#### <Tightening torque>

PTO shaft staking nut (030)	226 to 264 N-m (23.0 to 27.0 kgf-m)
PTO gear case cover mounting bolts (12)	77.5 to 90.2 N-m (7.9 to 9.2 kgf-m)



- (1) Wire harness
- (2) PTO change switch
- (3) O-ring
- (4) PTO shift arm
- (5) PTO shift lever
- (6) Shift rod
- (7) Ball (Detent)
- (8) Spring
- (9) PTO shift fork
- (10) Ball



4CAKLBCAP005A

(11) PTO switch cover  
 (12) PTO gear case cover bolt  
 (13) PTO gear case cover  
 (14) Ball bearing  
 (15) PTO gear shaft (13-16T)  
 (18) Ball bearing  
 (19) Staking nut  
 (20) Washer  
 (21) Ball bearing  
 (22) Thrust collar  
 (23) Inner ring  
 (24) Gear

(25) Hub  
 (26) Shifter  
 (27) Gear  
 (28) Inner ring  
 (29) Thrust collar  
 (30) Internal cir clip  
 (31) Ball bearing  
 (32) PTO shaft  
 (33) PTO gear case  
 (34) Oil seal  
 (35) Straight pin for transmission case  
 (36) Coupling

<Component parts of the kit>  
 (010) PTO gear (18T)  
 (020) PTO gear (43T)  
 (030) Nut  
 (040) PTO drive gear shaft (13T)  
 (050) Collar  
 (060) Ball bearing  
 (070) PTO label  
 (080) Instruction manual

## ■ Installation of Pre-assembled Gear Case

1. Make sure the two straight pins (34 or 35) are in position in the transmission case.
2. Make sure the coupling (35 or 36) is well fitted on the propeller shaft. Install the gear case assembly.

### IMPORTANT :

- Be sure to apply silicon adhesive between the pre-assembled gear case and the transmission case.

### <Tightening torque>

M12 bolt	77.5 to 90.2 N-m (7.9 to 9.2 kgf-m)
----------	-------------------------------------

**[M8540 / M9540 Previous models]****◆ DISASSEMBLING**

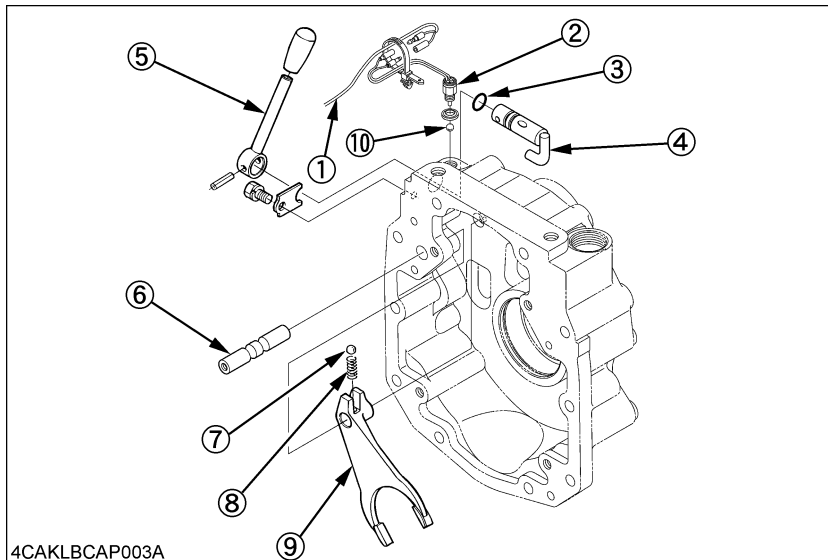
1. Remove the PTO change switch (2) and ball (10).
2. Remove the PTO gear case cover mounting bolts (12), then remove the PTO gear case cover (13).
3. Remove the stake of the staking nut (19), and then remove it.
4. Remove the bearing (21) by using the bearing puller.
5. Tap out the PTO shaft (32) to the rear side.
6. Remove the gears (24), (27), thrust collars (22), (29), inner rings (23), (28), hub (25) and shifter (26).
7. Pull out the PTO gear shaft (15) as a unit.
8. Remove the PTO shift fork parts and PTO shift lever parts.

**◆ REASSEMBLING**

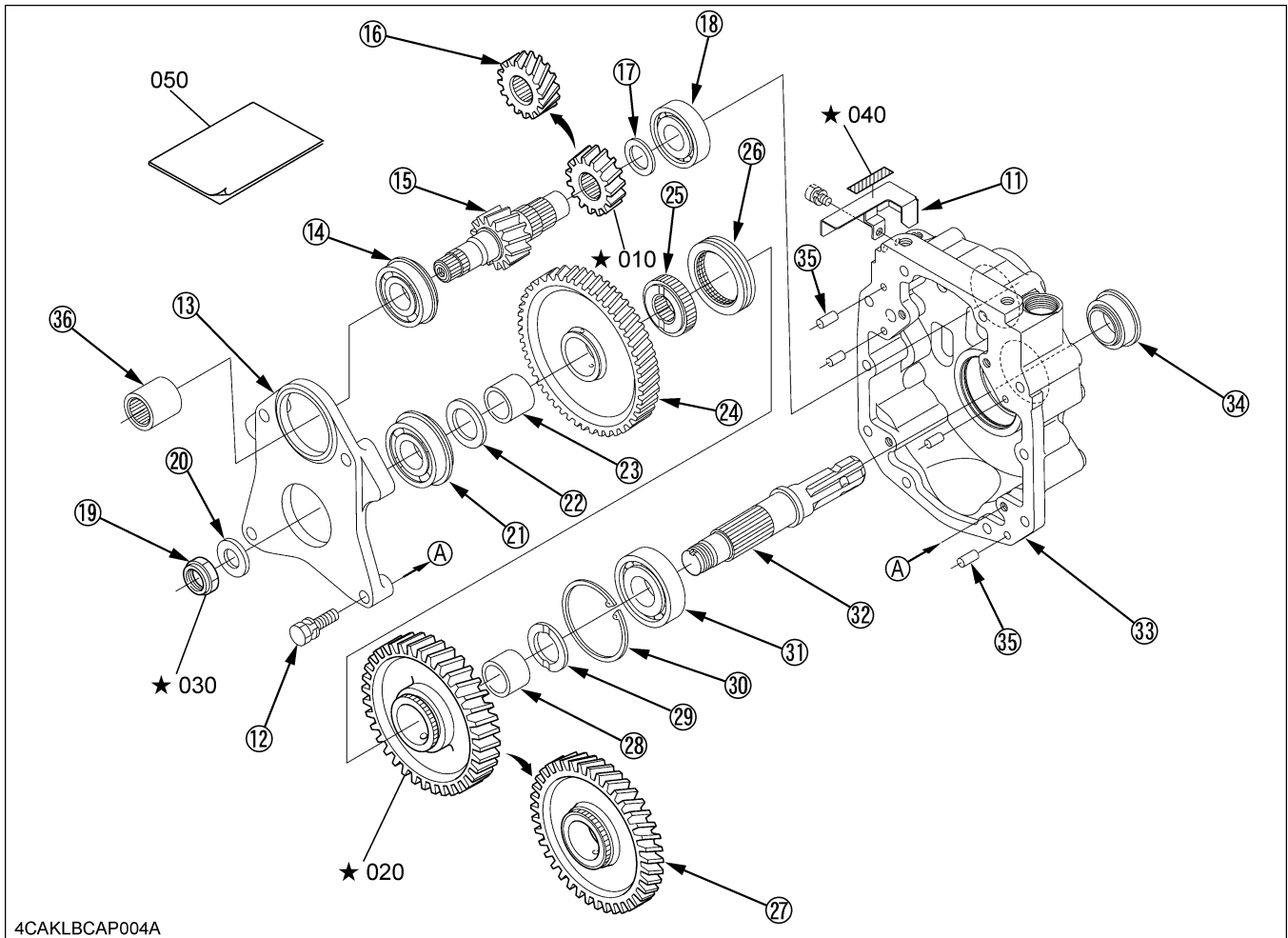
1. Replace the only parts (16), (19), (27) with new ones (010 to 030) (the ★-marked parts).
2. Direct the grooves of thrust collars (22), (29) to the inner rings (23), (28) sides.
3. Replace the PTO shaft staking nut (19) with new one (030), and stake it firmly after tightening.
4. Apply molybdenum disulfide (Three Bond 1901 or equivalent) to the inner rings (23), (28).
5. Apply grease to the oil seal (34) and O-ring (3).
6. Do not loose the balls (7), (10).
7. Replace the PTO label with new one (040) (the ★-marked label).

**<Tightening torque>**

PTO shaft staking nut (030)	226 to 264 N-m (23.0 to 27.0 kgf-m)
PTO gear case cover mounting bolts (12)	77.5 to 90.2 N-m (7.9 to 9.2 kgf-m)



- (1) Wire harness
- (2) PTO change switch
- (3) O-ring
- (4) PTO shift arm
- (5) PTO shift lever
- (6) Shift rod
- (7) Ball (Detent)
- (8) Spring
- (9) PTO shift fork
- (10) Ball



4CAKLBCAP004A

- (11) PTO switch cover
- (12) PTO gear case cover bolt
- (13) PTO gear case cover
- (14) Ball bearing
- (15) PTO drive gear shaft
- (16) Gear
- (17) Collar
- (18) Ball bearing
- (19) Staking nut
- (20) Washer
- (21) Ball bearing
- (22) Thrust collar
- (23) Inner ring

- (24) Gear
- (25) Hub
- (26) Shifter
- (27) Gear
- (28) Inner ring
- (29) Thrust collar
- (30) Internal cir clip
- (31) Ball bearing
- (32) PTO shaft
- (33) PTO gear case
- (34) Oil seal
- (35) Straight pin for transmission case
- (36) Coupling

&lt;Component parts of the kit&gt;

- (010) PTO gear
- (020) PTO gear
- (030) Nut

- (040) PTO label
- (050) Instruction manual

## ■ Installation of Pre-assembled Gear Case

1. Make sure the two straight pins (34 or 35) are in position in the transmission case.
2. Make sure the coupling (35 or 36) is well fitted on the propeller shaft. Install the gear case assembly.

### IMPORTANT :

- Be sure to apply silicon adhesive between the pre-assembled gear case and the transmission case.

### <Tightening torque>

M12 bolt	77.5 to 90.2 N-m (7.9 to 9.2 kgf-m)
----------	-------------------------------------



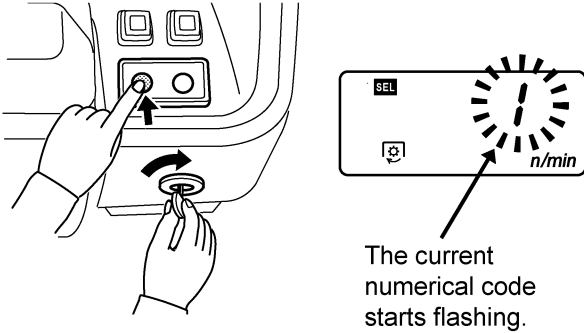
## ■ PTO Speed Display Mode Switching

When Dual Speed PTO kit is installed, it is necessary to switch the PTO speed display mode. Otherwise the PTO speed will not get correctly displayed in the LCD monitor.

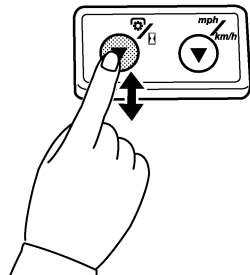
### ◆ Switching procedure

[EXCEPT M6060 / M7060 / M8560 / M9960]

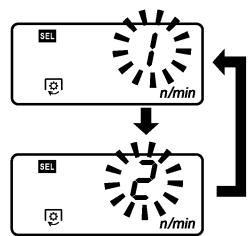
- ① While pressing the PTO/Hour meter select switch, turn the key switch to "ON" position.



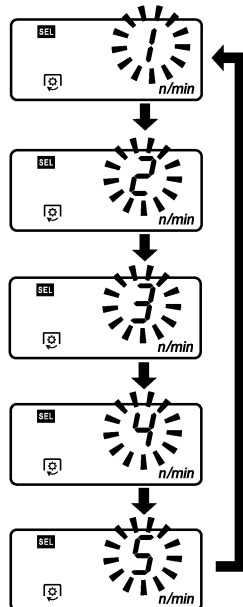
- ② Each time the PTO/Hour meter select switch is pressed, the code changes in the order of the figures below. Select the appropriate code according to the table below.



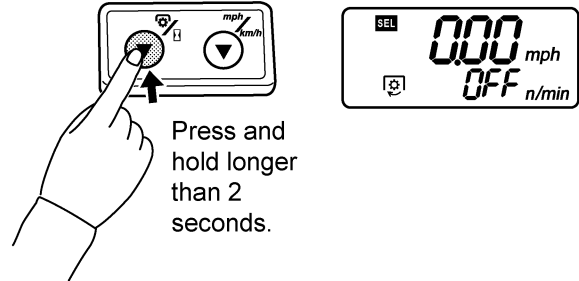
[M6040(N) / M7040(N) / M8540N / M9540N]



[M8540 / M9540]



- ③ Press and hold the PTO/Hour meter select switch longer than 2 seconds. The setting is put in memory, and the LCD monitor goes back to the PTO speed display mode.



#### NOTE:

- The setting will be cancelled if the key switch is turned OFF halfway in the procedure.

[M6040(N) / M7040(N) / M8540N / M9540N]

Numerical code	PTO speed (rpm)	
1	540 / 540E	with PTO gear shift lever
2	540 / 1000	

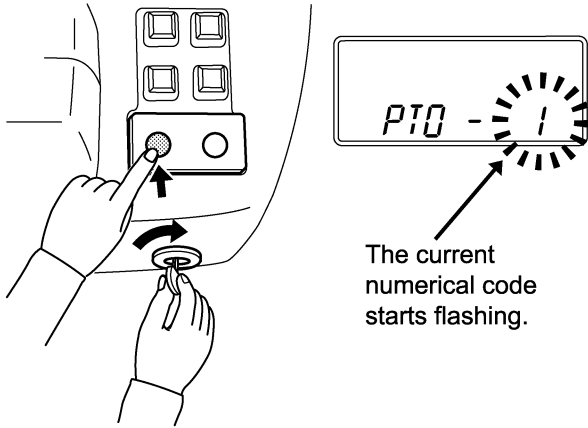
[M8540 / M9540]

Numerical code	PTO speed (rpm)	
1	Not select	
2		
3		
4	540 / 540E	with PTO gear shift lever
5	540 / 1000	

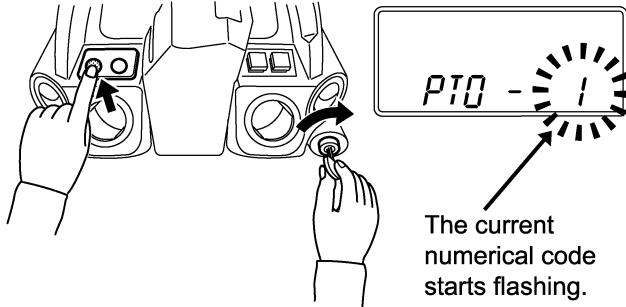
[M6060 / M7060 / M8560 / M9960]

- ① While pressing the PTO/Hour meter select switch, turn the key switch to "ON" position.

[ROPS TYPE]

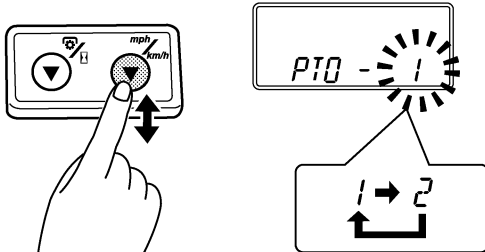


[CAB TYPE]

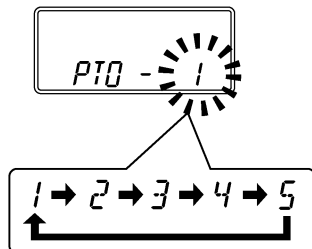


- ② Each time the Traveling speed select switch is pressed, the code changes in the order of the figures below. Select the appropriate code according to the table below.

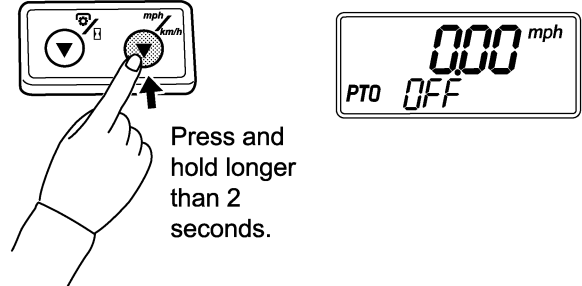
[M6060 / M7060]  
([1]→[2]→[1])



[M8560 / M9960]  
([1]→[2]→[3]→[4]→[5]→[1])



- ③ Press and hold the Traveling speed select switch longer than 2 seconds. The setting is put in memory, and the LCD monitor goes back to the PTO speed display mode.



**NOTE:**

- The setting will be cancelled if the key switch is turned OFF halfway in the procedure.

[M6060 / M7060]

Numerical code	PTO speed (rpm)	
1	540 / 540E	with PTO gear shift lever
2	540 / 1000	

[M8560 / M9960]

Numerical code	PTO speed (rpm)	
1	Not select	
2		
3		
4	540 / 540E	with PTO gear shift lever
5	540 / 1000	